
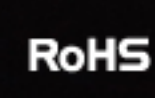





NL1485 ¹⁴⁵⁰⁰ Li-ion Battery

Capacity: **850mAh** Voltage: **3.7V**

- High Capacity
- Multiple Protections
- Certified by    

NITECORE®

NL1485 14500 850mAh
Li-ion Battery
High Capacity | Great Compatibility

High Capacity and Great Compatibility

With capacity of **850mAh** and output up to **3A**, the NL1485 is suitable for various portable electronic devices.



850mAh

These images are for guide purpose only, actual result may vary depending on ambient factors. They are the intellectual property of Nitecore. All rights to take legal action are reserved.

Internal Safety Features

1. Pressure relief valve protection activates in the event of a rapid temperature increase
2. Innovative anode design with high temperature resistance
3. Microporous barrier protects delicate internal components
4. Built-in PTC inhibits high current surges



Integrated high performance protected circuit

- Automatically protects against overcharge, over discharge and short-circuit
- Utilizes a high quality battery protection IC
- Utilizes high power MOS FETs in the current regulation module for better efficiency and superior output.

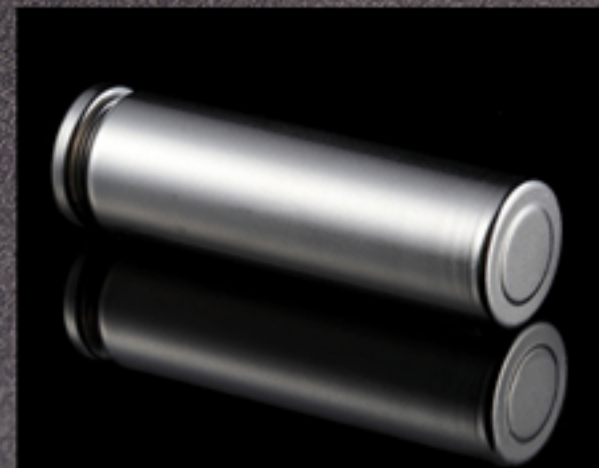


NITECORE®

NL1485 14500 850mAh
Li-ion Battery
High Capacity | Great Compatibility

External Safety Features

High strength plastic wrapper for preventing tear and wear.



Fully covered by durable metallic wrapper to guard against abrasion.



Equipped with nickel-plated stainless steel protectors ensuring high impact resistance, good electrical conductivity and oxidation resistance.

These images are for guide purpose only, actual result may vary depending on ambient factors. They are the intellectual property of Nitecore. All rights to take legal action are reserved.



Low Cost and Environmentally Friendly



The NL1485 battery can be recharged over 500 times, which is the equivalent of 500 pairs of CR123 batteries.



Features

Type: NL1485

Capacity: 850mAh

Voltage: 3.7V

Continuous discharge current: 0.8A

Length: 2.05"

Diameter: 0.56"

Weight: 0.74oz



Precautions:

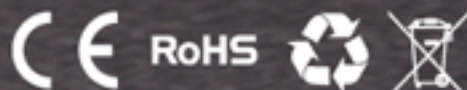
- Never expose the battery to water or fire.
- When charging or using batteries, ensure the positive and negative ends correspond with the positive (+) and negative (-) symbols.
- To extend battery life, the battery should be charged every three months when unused for long periods.
- Keep out of the reach of children.

NITECORE®

NL1485 14500 850mAh
Li-ion Battery
High Capacity | Great Compatibility



Certified by international standards and globally insured



These images are for guide purpose only, actual result may vary depending on ambient factors. They are the intellectual property of Nitecore. All rights to take legal action are reserved.